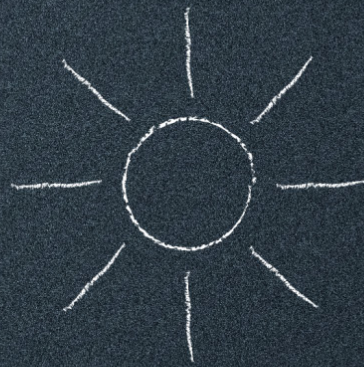
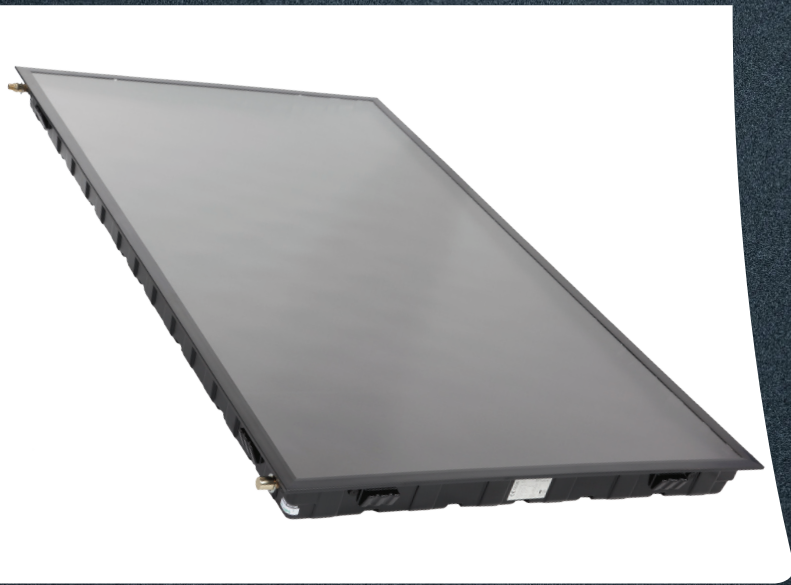


SOLAR THERMAL SYSTEM



Harnessing solar energy for thermal heat production



Roth Electronic Controls

BW (domestic water)

BW/H (domestic water and heating) and BW/H Comfort

Multifunctional and efficient regulation, simple control elements, large display.



Roth Solar Station Individual connections for pre-insulated flexible stainless steel piping and 1/2" and 3/4" copper .



Roth Storage Tank

80 and 119 gallon, steel exterior with powder coat finish, internal coil heat with 4500W supplemental electric heating element and second coil heat exchanger.

FLAT COLLECTOR HELIOSTAR 252 S4

- Extremely durable, unbreakable, vacuum formed polycarbonate case (impact, temperature, wind, and UV-resistant, seamless and completely sealed), about 20-30% lighter than other collectors
- High quality coated glazing of absorber guarantees highest performance
- Compatible with drainback systems
- Full 2.5" rockwool back wall insulation
- Easy installation with few tools, optimal stability, attachment system not visible, installation friendly accessories
- 10 year Roth system guarantee



Hardware and brackets for easy installation



SOLAR PACKAGES

Package 1 for domestic water heating for 3-4 person household includes:

2 flat panel collectors, entire roof attachment components, solar station, domestic water heating control (BW) and 10 liters of solar fluid.

Package 2 for domestic water heating for 5-6 person household includes:

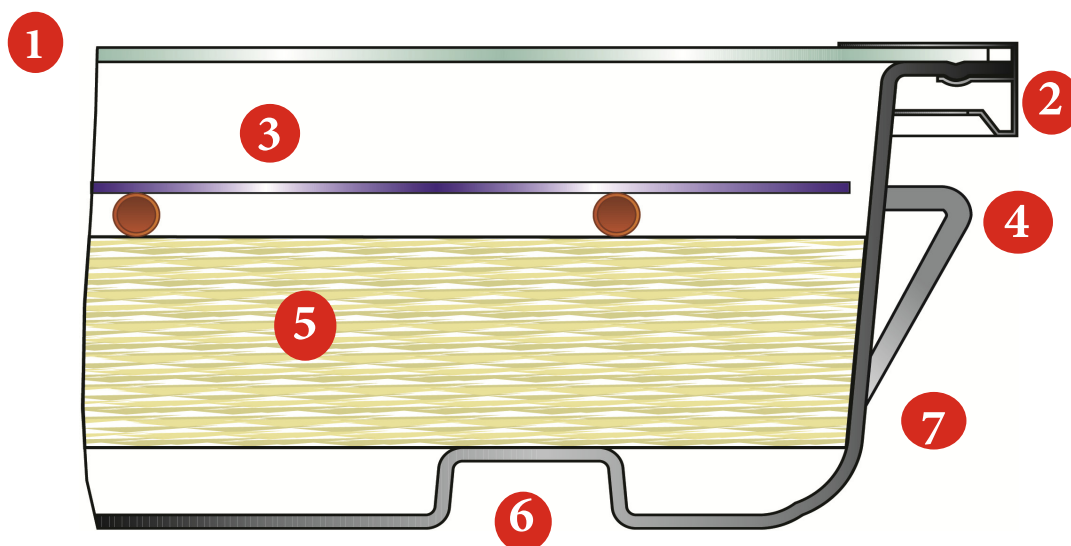
3 flat panel collectors, entire roof attachment components, solar station, domestic water heating control (BW) and 10 liters of solar fluid.

Package 3 for domestic water heating and heating support for 5-6 person household includes:

4 flat panel collectors, entire roof attachment components, solar station, domestic water heating and heating support control (BW/H) and 10 and 5 liters of solar fluid.

Package 4 for domestic water heating and heating support for 7-10 person household includes:

5 flat panel collectors, entire roof attachment components, solar station, domestic water heating and heating support control (BW/H) and 10 and 5 liters of solar fluid.



- 1-highly transparent safety glass
- 2-wrapped around profile
- 3-high selectively coated absorber plate
- 4-mounting points
- 5-2.5" insulation
- 6-grooves for slide-in mounting
- 7-collector case made out of polycarbonate

Length	82.7"
Width	47.3"
Height	4.3"
Gross Surface Area	27.2 ft
Weight	84 lbs

**Generation**

- > Solar Thermal
- > Geothermal Heat Pump

Storage

- > Septic
- > Cistern
- > Rainwater Collection
- > Oil Storage Tanks

Distribution

- > Radiant Floor Heating
- > Plumbing Systems



Roth Industries, Inc.
Roth North America Corporate Office
PO Box 245
Syracuse, NY 13211
P: 888.266.7684
F: 315-475-0200
www.roth-usa.com

Distributed By: