



PEX-C STATE-OF-THE-ART PLUMBING SYSTEMS

ROTH TOTAL SYSTEM ENGINEERING

- Tubing and fittings continually tested and certified to meet national standards for drinking water systems
- Full system with various size tubing and accessories and professional support
- Twenty-five(25) year warranty (see warranty for more details)



PEX SYSTEMS

- PEX-c tubing is easier to handle and requires fewer fittings
- Environmentally friendlier
- Better flow characteristics
- Faster and easier to install and less temperature and pressure fluctuations

Roth PEX-c for Purity

- State-of-the-art process of cross-linking polyethylene tubing with high energy electron beam-no chemicals used!
- Stronger, more resilient and resistant to higher temperatures and pressures than other plastic pipe systems
- Very uniform cross-linking throughout the entire wall thickness of the tubing



Roth Industries
Call 888-266-7684 USA or 800-969-7684 CAN
or visit our web site at www.roth-america.com



PEX-C STATE-OF-THE-ART PLUMBING SYSTEMS

ROTH-the home of flexible, complete plumbing systems

Roth Pex-c Tubing

Available in 3/8", 1/2", 3/4" and 1" diameters in coils from 100' to 1,000' long (depending on diameter) and 20' straight lengths in packages of 8 or 10 pieces (depending on diameter) in either red, white or blue



Roth Pex-c Barbed Stops

Available in chrome or brass finish, straight or angle



Water Heaters

An assortment of fittings is available to simplify installing water heaters, meet codes and save on labor costs



Frost-Proof Sillcocks

The long stem on this fitting accommodates varying wall thicknesses to easily install outside water outlets. Fitting includes an antisiphon faucet



Shower-Lock Elbows

Features 2" brass lock nuts to secure both sides of the finished wall. Shower-lock elbows are ideal for fiberglass stalls



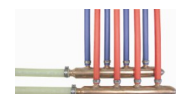
Tees

Different configurations of Tees enable easy sizing of mains and installation of branches to outlets.



Hot and Cold Manifolds

Roth Manifolds are available pre-configured or as building blocks for custom applications.



Roth Industries US and Canada

Distributed by:

268 Bellevue Ave South
Watertown, NY 13601
Call: 888-266-7684
Fax: 315-475-0200
Email: info@roth-usa.com

1607 rue de l'Industrie
Beloeil, Canada J3G 4S5
Call: 800-969-7684
Fax: 450-464-7950
Email: service@roth-canada.com